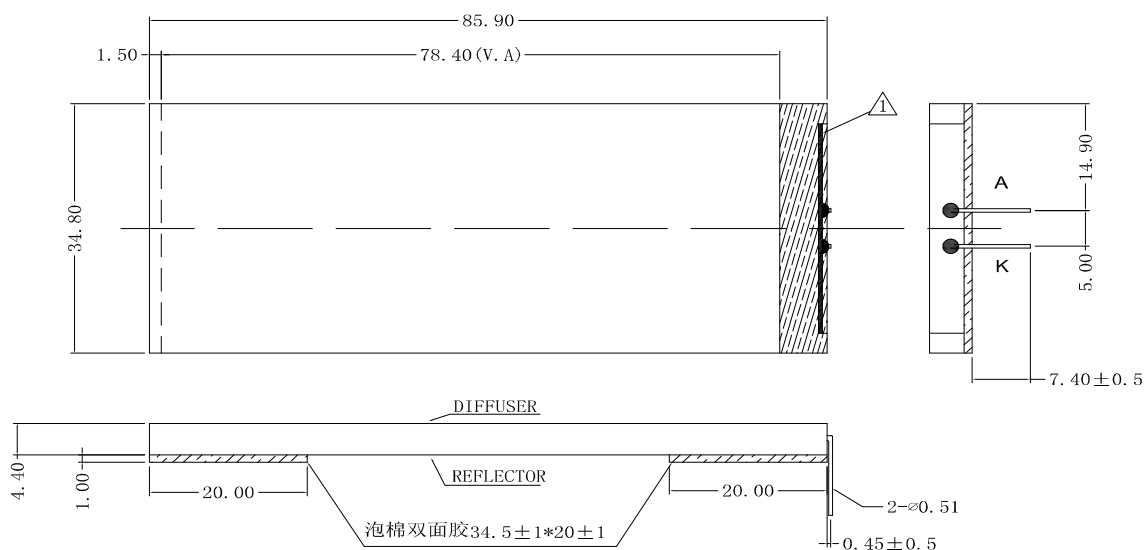




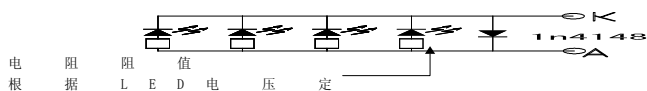
1. 结构尺寸 MECHANICAL OUTLINE (未注尺寸公差 Unspecified Tolerances is .xx ±0.2 .x ±0.2)

Color: White
颜色: 白色



2. 电路图 CIRCUIT DIAGRAM (LED SMD 1 × 4 = 4dies)

注: 符合 ROHS



3. 保存和焊接条件 STORAGE & SOLDERING CONDITIONS:

- Store with care. Storing the units in bad condition will cause the reflector sheet And decrease it's adhesive power. Storage The products under the condition: temperature(25°C ± 10°C) and humidity (65% RH ± 20% RH) our recommendation.
- The Soldering Temperature is 300°C ± 5°C and Soldering Time should be less than 3 sec, and soldering iron power should be less than 30W.
- The soldering point should be farther than 1.6mm from body.

- 注意保存. 保存条件不好时.会降低反光膜(扩散膜)与导光片(反射壳)的粘附力. 推荐保存条件为: 温度: 25°C ± 10°C 湿度: 65% RH ± 20% RH
- 焊接温度 300°C ± 5°C,焊接时间小于 3 秒,烙铁功率小于 30W.
- 焊接点应离产品实体大于 1.6mm.



4. 极限参数 ABSOLUTE MAXIMUM RATINGS

(除非特别说明,环境温度 Ta=25°C,Unless specified, The Ambient temperature Ta=25°C)

项目 Item	符号 Symbol	条件 Condition	值 Rating	Unit
反向电压 Reverse Voltage	Vr		0.8	V
*极限直流正向电流 Absolute maximum forward current	Ifm		100	mA
*脉冲驱动时极限正向电流 Peak forward current	Ifp	1 msec plus 10% Duty cycle	240	mA
极限功耗 Power description	pd		320	mW
工作温度 Operating temperature range	Topt		-20~+70	°C
贮存温度 Storage temperature range	Tst		-30~+80	°C

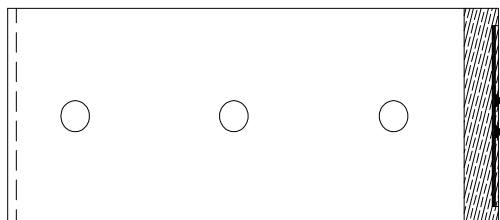
*当工作温度高于 25°C 时,Ifm, Ifp 和 Pd 必须降低; 电流降低率是 $-0.36 \times 4\text{mA}/^\circ\text{C}$ (直流驱动), 或 $-0.86 \times 4\text{mA}/^\circ\text{C}$ (脉冲驱动), 功耗降低率是 $-0.75 \times 4\text{mW}/^\circ\text{C}$. 产品的工作电流不能大于对应工作温度条件 Ifm 或 Ifp 的 60%.

For operation above 25°C, The Ifm, Ifp & Pd must be derated, the Current derating is $-0.36 \times 4\text{mA}/^\circ\text{C}$ for DC drive and $-0.86 \times 4\text{mA}/^\circ\text{C}$ for Pulse drive, the Power dissipation is $-0.75 \times 4\text{mW}/^\circ\text{C}$. The product working current must not more than the 60% of the Ifm or Ifp according to the working temperature.

5. 电, 光特性 ELECTRICAL/OPTICAL CHARACTERISTICS

(除非特别说明,环境温度 Ta=25°C,Unless specified, The Ambient temperature Ta=25°C)

项目 Item	符号 Symbol	最小值 min	典型值 typ	最大值 max	单位 Unit	测定条件 Condition
正向电压 Forward Voltage	Vf	3.3	3.5	3.7	V	If=60mA
反向电流 Reverse Current	Ir		15		mA	Vr=0.8V
主波长 Dominant wave length	λ_p				nm	If=60mA
频谱半宽度 Spectral Line Half width	$\Delta \lambda$					If=60mA
*亮度 Luminance (BM-7)	Lv	380	500	700	cd/m ²	If=60mA
色坐标	X Y	X:0.27 Y:0.27		X:0.31 Y:0.31		If=60mA



*亮度值是 3 个测量点的平均值, 亮度最小值比最大值一般大于 70%. 使用 BL-200-V2 亮度色度仪测量, 测量光圈 $\phi 5.0\text{mm}$.

The luminance is the average value of 3 points, and The Lvmax./Lvmin. is more than 70% Typical.

The measurement instrument is BL-200-V2 luminance Colorimeter. The aperture is $\phi 5.0\text{mm}$.